

ScanPal2 Instructions – Install the Aralco Program

NOTE: The following will over-write whatever program you have installed on your scanner – the program installed will be designed to work with the Aralco BOS

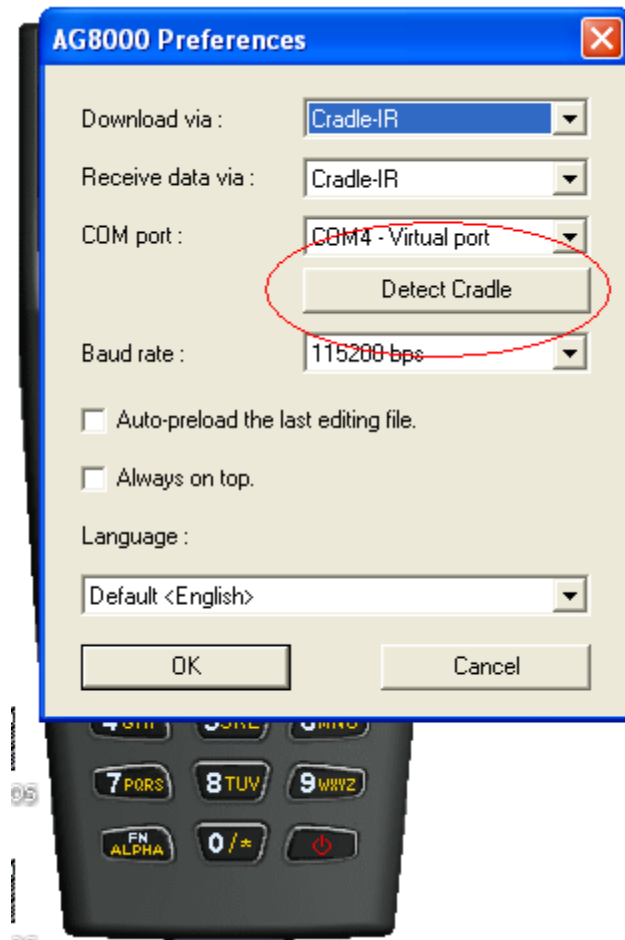
Ensure the scanner files are all stored in the same directory of the computer

These initial steps are to check to see what Com Port the USB cradle is set to

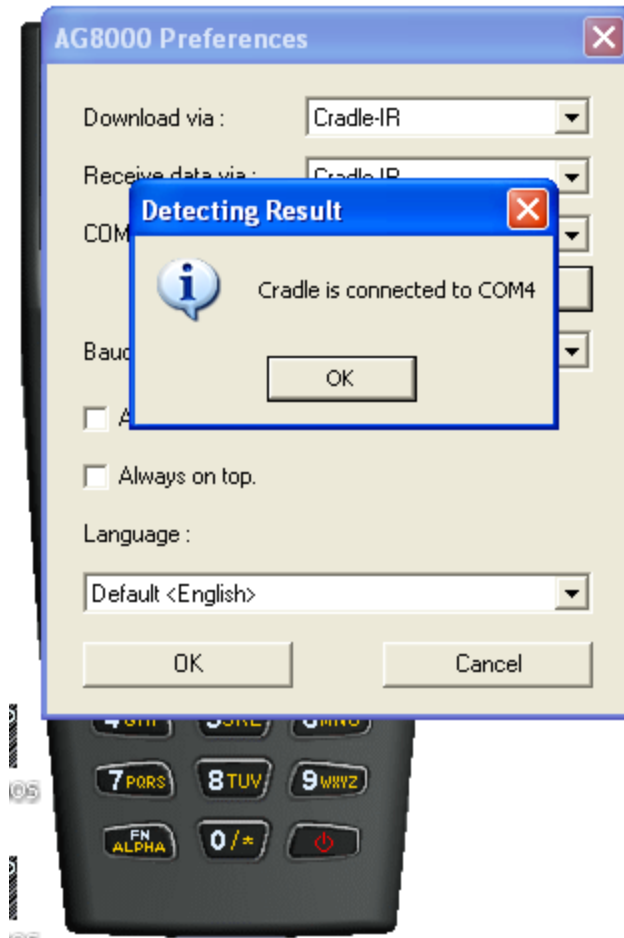
1. Ensure the handheld scanner is turned off and make sure the cradle is plugged in (powered) and the drivers are installed (please see other documentation if you need to install the drivers)
2. To check the USB Com Port we need to run the scanner interface program – **AG8000N.exe**
 - a. The scanner interface will now open up
3. On the scanner interface, right-click on it with the mouse to bring up a menu – select **Preferences...**



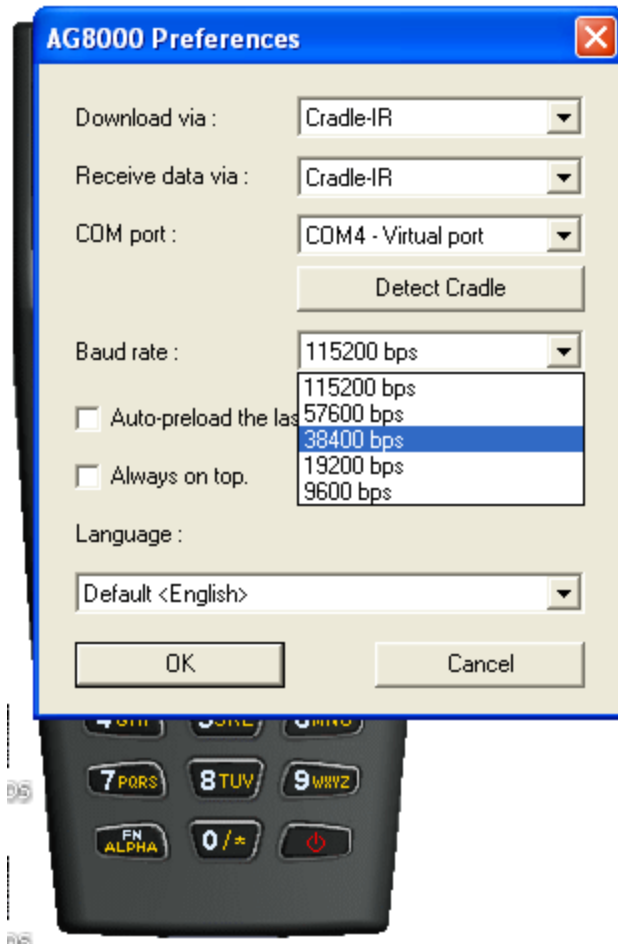
4. Press the **Detect Cradle** button – this will automatically check the cradle port setting



5. Once pressed, the program will search for the cradle and display a message (the com port on your computer may be different)



6. Press the **OK** button
7. Change the **Baud rate** (using the dropdown) to **38400**



8. Once done, press the **OK** button
9. The scanner interface is now set up the same way as the handheld should be

Installation of the Aralco Program in the Scanner

10. Make sure the scanner is OFF-On the handheld scanner itself, hold down **7** and **9** buttons at the same time, and press the **Power** button – the scanner will emit a few beeps and then turn on to the **System Menu**
11. In the **System Menu** go to the **Load Program** option (press **6** or using the arrows, scroll to it and press the right blue button)
12. You will now be in the **Load Program** menu – select option **1 – Cradle-IR**
13. The next window will be **Baud Rate** – select option **1 – 38400**
14. You will now be prompted to place the scanner into the cradle (keep in mind the scanner will time out after about 30 seconds so you may need to repeat steps **4 – 6** again)
15. You now need to run the software upload program – run **ProgLoad.exe**

Program download (Ver. 1.23) ✕

Comm settings

Comm type : RS-232 / IrDA

COM port : 1 (1~255)

Baud rate : 115200 bps

File option

File type : .SHX file

File name : Browse

C:\Aralco\IMPEXP\CIPHERLAB 8000 (U

OK Exit

16. We will need to change a few options to match the way the scanner and the cradle are setup
17. First change the **Com Port** to match step 5 above

Program download (Ver. 1.23) ✕

Comm settings

Comm type : RS-232 / IrDA

COM port : 4 (1~255)

Baud rate : 115200 bps

File option

File type : .SHX file

File name : Browse

C:\Aralco\IMPEXP\CIPHERLAB 8000 (U

OK Exit

18. Now change the **Baud rate** to **38400**

Program download (Ver. 1.23) ✕

Comm settings

Comm type : RS-232 / IrDA

COM port : 4 [1~255]

Baud rate : 115200 bps

115200 bps
57600 bps
38400 bps
19200 bps
9600 bps

File option

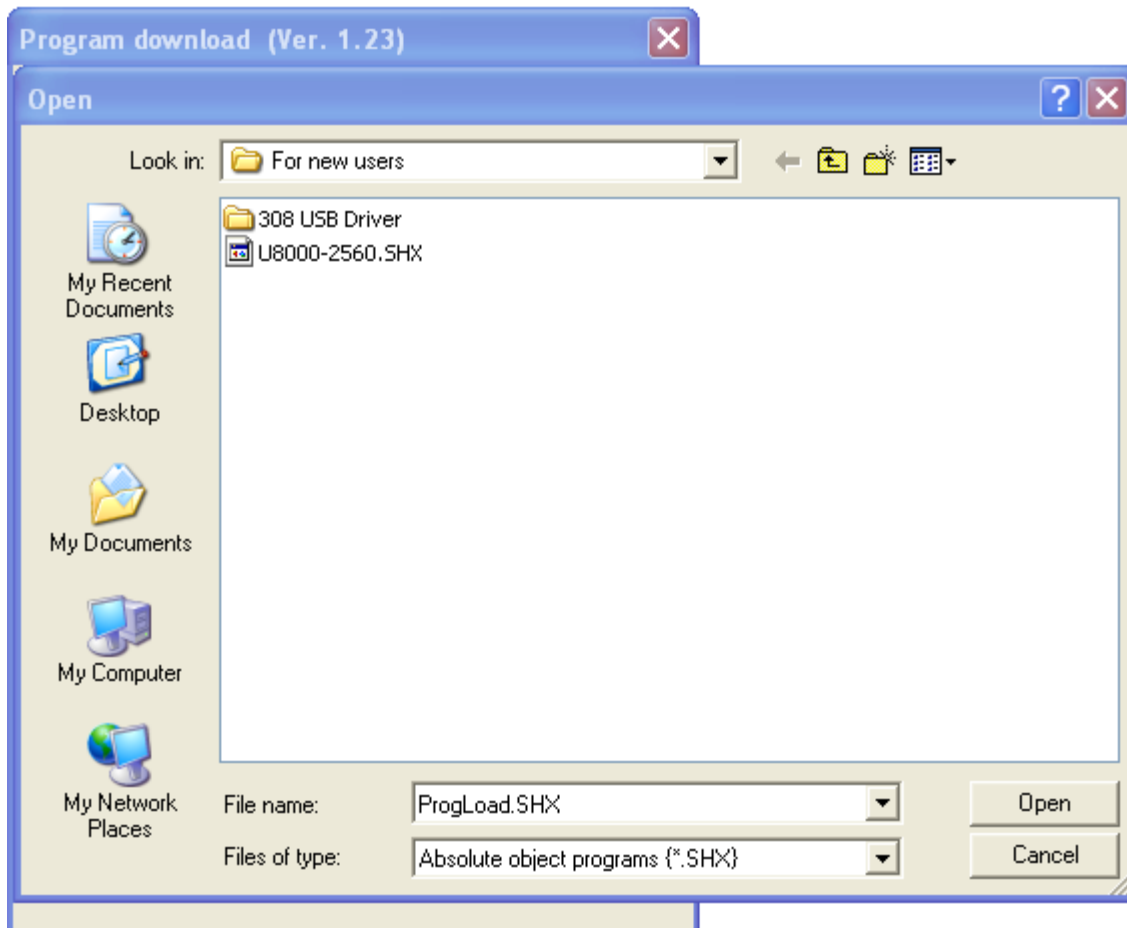
File type : .SHX file

File name : Browse

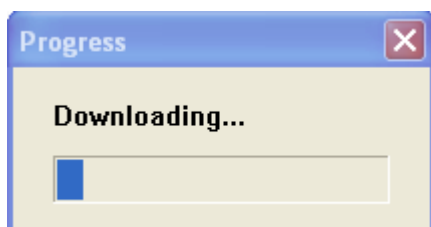
C:\Aralco\IMPEXP\CIPHERLAB 8000 (U

OK Exit

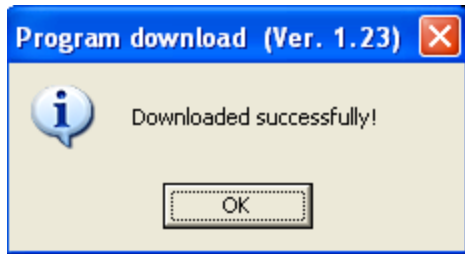
19. Now the initial program needs to be loaded into the scanner
20. Click on the **Browse** button next to **File Name**



21. Browse to the folder where all the Aralco files are saved to and select the **U8000-2560.SHX** file
22. Click on **Open**
23. Ensure the scanner in the cradle is still in its waiting mode and then press **OK**
24. The program will now begin sending the program to the scanner



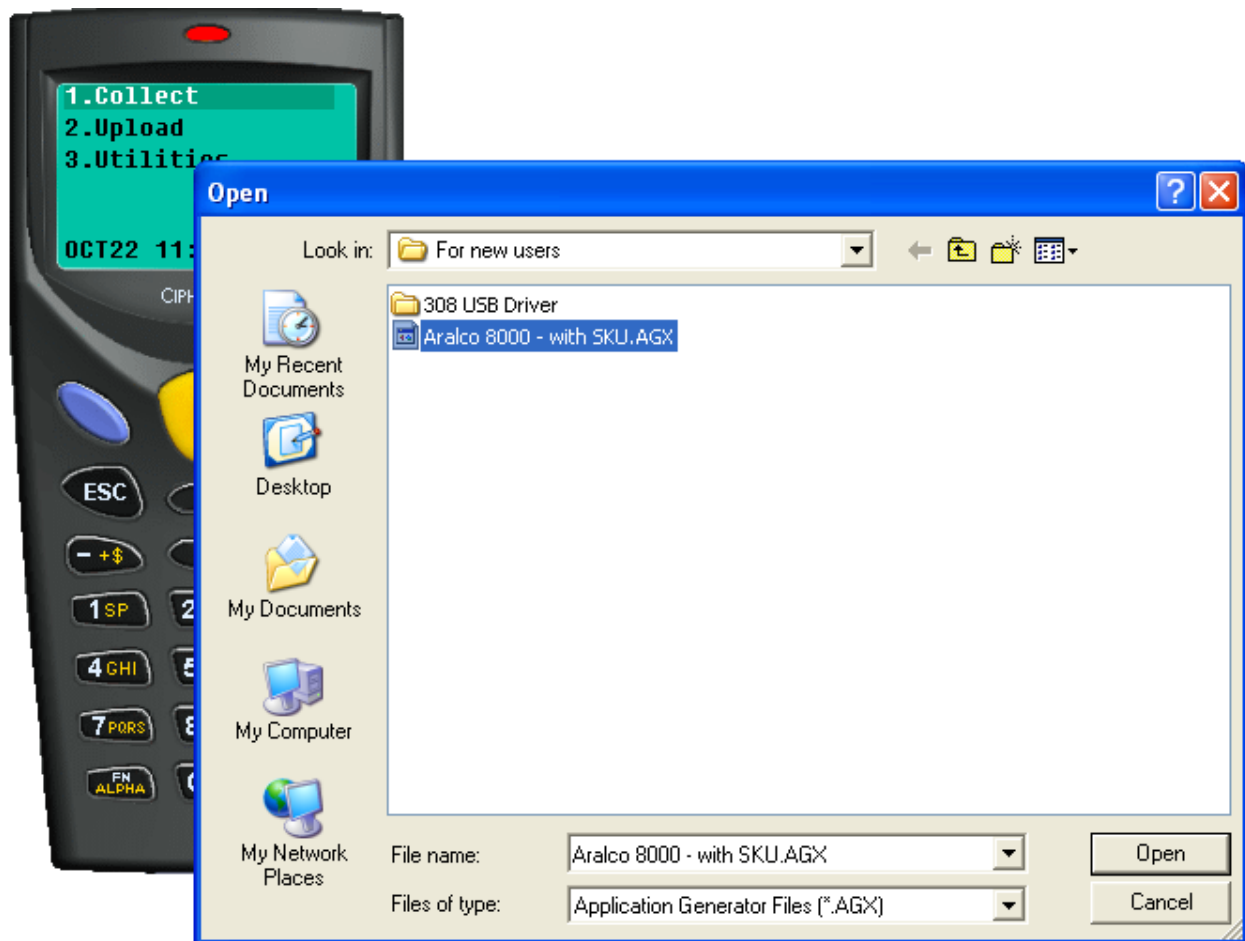
25. The program may look like it is not responding, or the status bar is not moving – but when it is complete you will get a message saying so
 - a. If an error occurs, or it times out – check the **Com Port** settings again, and check the **Baud Rate** – make sure they match




26. You can now close the program on the computer – press **Exit**
27. On the scanner itself there will be a message saying ***** Complete *****
28. Press the right blue button to continue – you will be taken to the **Load Program** window
29. Turn the scanner off
30. Turn the scanner back on like normal (press just the **Power** button)
31. A message will come up saying **New Program**
32. Do not press anything for a few seconds – the scanner will automatically take you to the **Main Menu**
 - a. If not, just **Escape** through until you get to the **Main Menu**
33. We will not upload the Aralco Program
34. Chose option **3 – Utilities**
35. Check Baud rate → 1-settings, 3. Baud rate, Choose 3 for 38400. Press Escape
36. At the next window, chose option **6 – Load Program**
37. A message will come up saying **Connecting..** – place the scanner into the cradle (as above, the scanner will time out after a certain time – if so, just repeat steps **34 – 36**)
38. Start the **AG8000N.exe** program again
39. Right-click on the interface program and select **Open...**



40. Browse to the folder where the Aralco files are saved, and select **Aralco 8000 with POS Data Import-3.AGX**



41. Press **Open**
42. A new window called **Application Generator** will open up – **DO NOT CHANGE ANYTHING**
43. Press the **OK** button to close the window



Application Generator - [C:\Aralco\IMPEXP\CIPHERLAB 8000 (USB)\For new users\Aralco 800...

Form | Menu | Lookup | Barcode | Settings | Startup

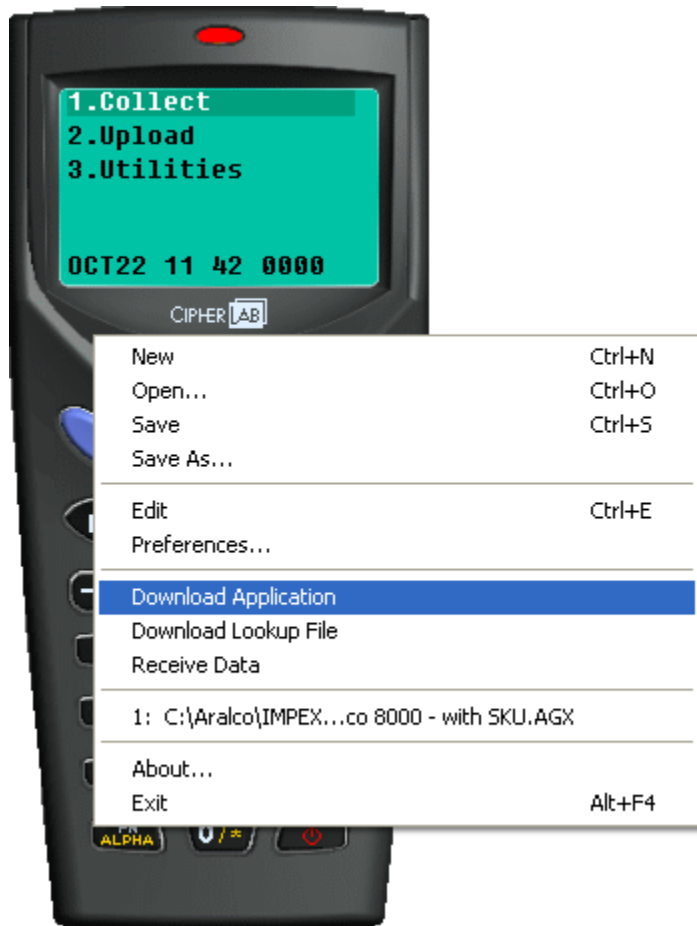
Name : form 1 Esc : main Lookup : nil Time Stamp

Font : large Next : form 2 Record : save Branch

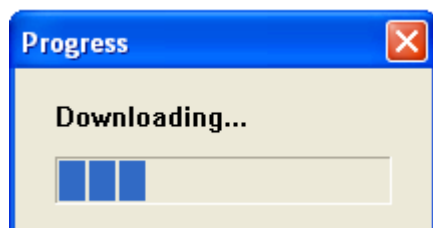
Line	Data type	Prompt	Input source	Min length	Max length	Variables	Properties
#1	prompt	Count	both	0	50	nil	more...
#2	text	Store..	both	0	50	nil	more...
#3	text	Bin#	both	0	50	nil	more...
#4	text	Staff..	both	0	50	nil	more...
#5	nil		both	0	50	nil	more...
#6	nil		both	0	50	nil	more...
#7	nil		both	0	50	nil	more...
#8	nil		both	0	50	nil	more...

OK Cancel

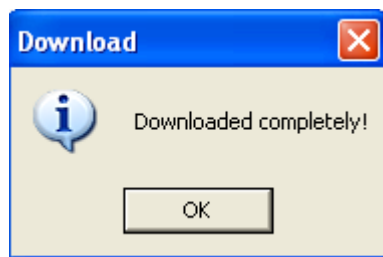
44. You will now be returned back to the interface program
45. Right-click on the interface and select **Download Application**



46. The program will now upload into the scanner



47. Once it is complete you will get a message saying so – press **OK**



48. **NOTE:** If you get a **Time Out** or **Failure** message you need to ensure that the correct **Com Port** is select, and the correct **Baud Rate** is select in the **Preferences** – use **Steps 3 – 8** to confirm

- a. You will also have to press **Escape** on the scanner and repeat **Steps 38 – 46**
- 49. Take the scanner out of the cradle
- 50. Turn it off, and then turn it back on again
- 51. The scanner menu will now look like what you see in the scanner interface program on the computer
- 52. **Optionally** – you can set the date/time
 - a. Go to **Utilities** – option **3**
 - b. Select **Set Date/Time** – option **5**